
What Moves You Arizona

let's talk. let's listen. let's decide.

A Transportation Plan for 2035

Steering Team I

June 15, 2010





Overview

- Your Role in the Long-Range Plan
- Relationship of Long-Range Plan to bqAZ
- Intended Process and Outcome
- Current Activity
 - Goals and Objectives
 - Performance Measures
- Participation Plan



Foundation to Build Upon

- bqAZ Statewide Framework
- Accepted by State Transportation Board January 15, 2010
- Vision and guiding principles focused on:
 - *multimodal mobility*
 - *economic vitality*
 - *sustainability and environment*
 - *safety and security*

Multimodal Mobility

What are the transit elements?

- Express Bus
- Intercity Bus
- Local Transit Service
- Transit Center

What are the roadway elements?

- Freeway
- State Highway
- Arizona Parkway
- Principal Arterial
- HOV Lane

What are the rail elements?

- High Speed Rail
- Intercity Rail
- Commuter Rail

Goal:
Develop a multimodal system, moving people and freight that offers transportation choices and connects all of Arizona, while linking the state nationally and globally. Reduce traffic delay to enhance economic activity and provide more time for our families and enjoying other pursuits.



What supports a competitive economy?

Value added manufacturing creates jobs to build the Arizona economy.



Potatoes grown in a farm in Queen Creek sell for \$0.20/pound



Potatoes are trucked by Arizona truckers to Goodyear



Potatoes are manufactured into potato chips sold to Walmart at \$2.00/pound



Potato chips shipped to Walmart distribution center in Buckeye by Arizona truckers



Potato chips sold nationally by Walmart at \$3.75/pound

FACT: The more value the business process can add to the resources available in Arizona, the more revenue is generated in the local economy and the more jobs created.

FACT: Agricultural products have far-reaching impacts.

Tourism attracts visitors who spend money in Arizona.



What does a focused growth pattern look like?

Land Use

Two-thirds of the development on the ground in 2050 will be built after 2007, allowing ample opportunities for communities to shape growth.



Transportation

Residents of compact neighborhoods drive 1/3 fewer miles than those in automobile-oriented suburbs.



Residents of a transit-rich neighborhood spend 9 percent of their annual family income on transportation; residents in an automobile-dependent suburb can spend up to 25 percent on transportation.



Environment

Shifting 60 percent of new growth to compact development patterns would save 79 million tons of CO2 annually by 2030.

Compact development reduces typical per capita water usage by more than 10 percent.

Economic Development

Properties in walkable, compact developments are valued approximately 15 percent higher than the same houses in a conventional subdivision.

What kinds of safety enhancements are recommended?

- Grade Separations
- Congestion Management Strategies
- Passing Lanes
- Bus Pullouts
- Repair of Aging Roadways
- Shoulders





Voices of the Vision

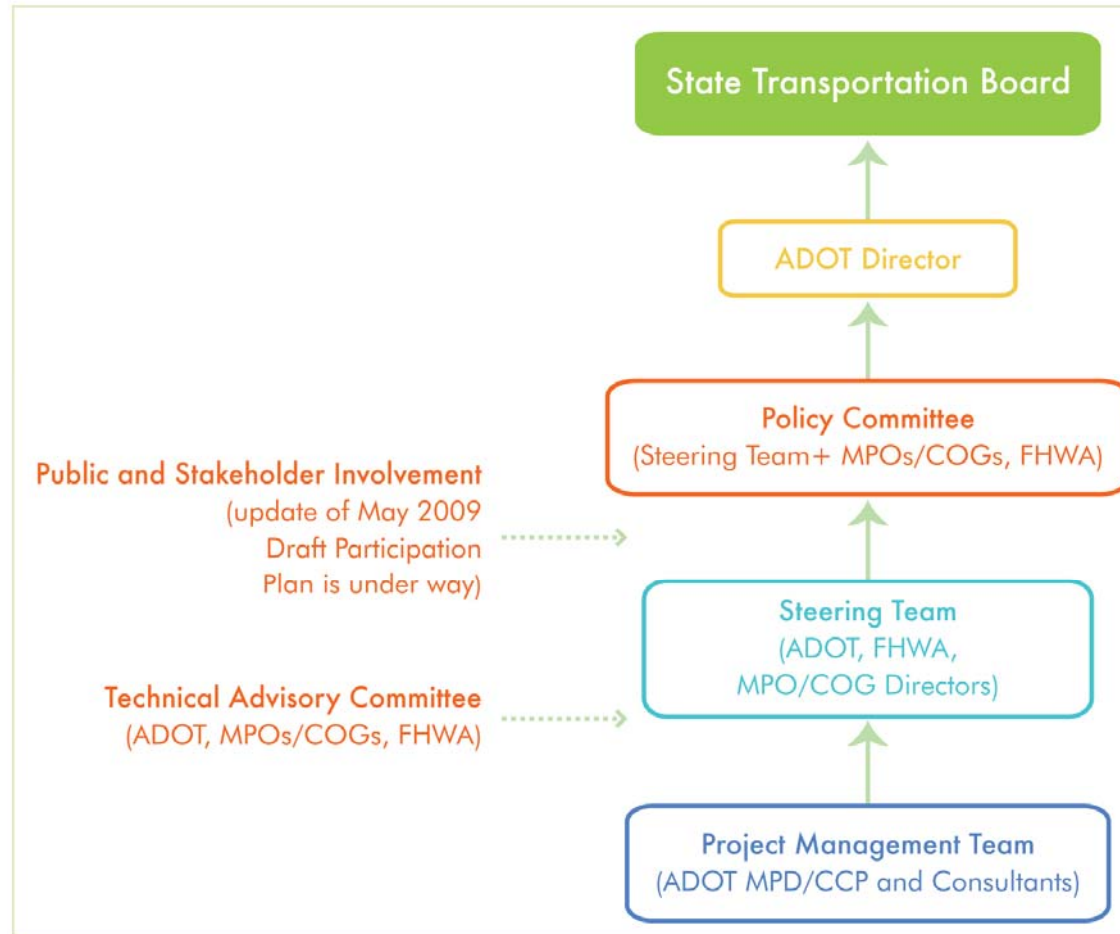
Video clip (4.5 minutes)

*ADOT listens
and
Arizonans want choices and balance*





Decision Structure



MPD Multimodal Planning Division
 CCP Communication and Community Partnerships Division
 COG Council of Governments
 MPO Metropolitan Planning Organization
 FHWA Federal Highway Administration



Collaborative Partnership Commitments

- Participate fully in the creation of the LRTP
- Open, honest, and frequent communication (internal and external)
- Consensus-based decision making to the greatest extent possible
- Commitment to multi-agency implementation



From Vision to Plan

Long-Range Vision

- How should we grow?
- 2050 Vision
- Multimodal
- Fiscally unconstrained

Long-Range Plan

- What are our priorities, how do we pay?
- 2035: Focusing the Vision
- Multimodal
- Fiscally constrained
- Emphasis on investment choices, not projects
- Performance-based



L RTP Building Blocks

Not starting from scratch

Need to know where we want to go

Need to know how to measure success

Need to identify and assess potential “futures”

Need to identify priorities associated with Alternative Program Choices



Plan Parameters

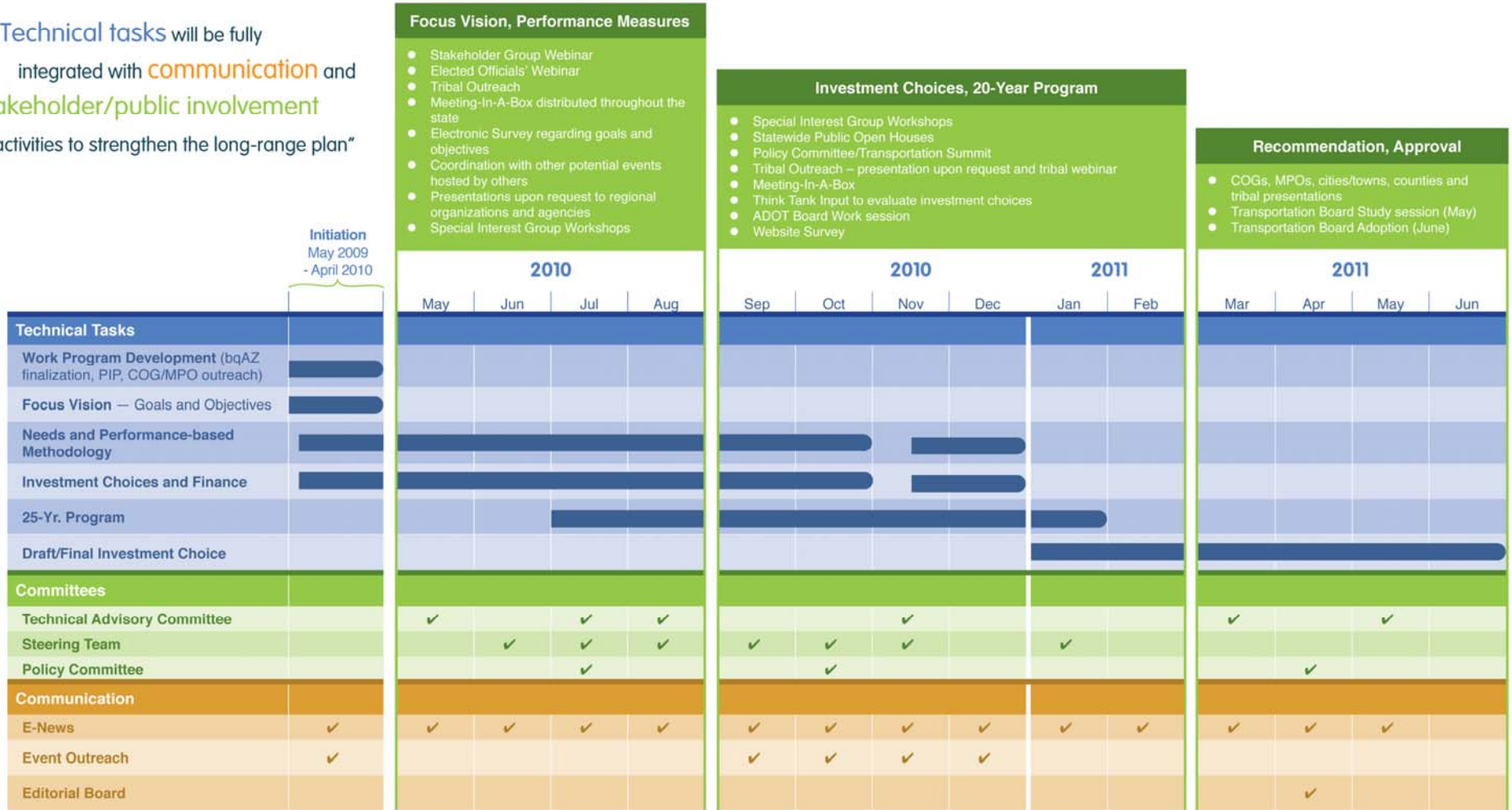
- Federal requirements/guidelines
 - Consideration of planning factors
 - Stakeholder involvement
 - Coordination with local and regional plans
 - Likely federal move to performance management
- Full participation of planning partners
- Consistency with State requirements



Integrated Process



“Technical tasks will be fully integrated with communication and stakeholder/public involvement activities to strengthen the long-range plan”





Focusing the Vision

- Implementation of bqAZ Vision
- Refine Vision to be specific and focused on investment priorities and opportunities
- Create goals, objectives and performance measures
- MPO/COG collaboration



Performance Measurement:

How we define success





Needs Analysis

- How do we keep the State system functioning?
- How do we enhance it?
 - Preservation, modernization, expansion
 - All modes (freight, transit, aviation, rail, highways, bike/ped)
 - Other modes – recent plans, stakeholder identified needs, bqAZ
- What will it cost?



Revenue Forecasts

- Baseline forecast
- Assumptions regarding key factors
- Key data
 - VMT growth
 - Inflation
 - Population growth
- Gap analysis



Financial Analysis

“Pay for the Future”

- What can we afford under various revenue and need assumptions?
- Are there other sources of revenue that can be considered?
 - User fees
 - New taxes
 - Innovative sources

Alternative Investment Choices





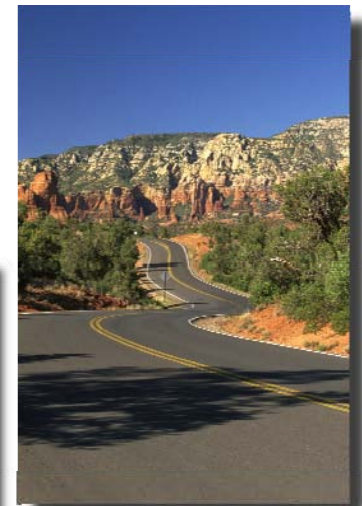
Alternative Investment Choices

- Demonstrate choices, tradeoffs, consequences
- Strategies for investment
 - Funding level
 - Mix of expansion, modernization, preservation
 - Modal emphasis
 - Supporting policies
- Not project-specific



Plan Outcomes

- Recommended Investment Choice
- Describes the system and how it will perform over 25-year horizon
- Influences capital programming





Goals and Objectives



Background

- Built from foundation of bqAZ
- Essential link between bqAZ vision and implementation
- Establish ADOT's role in implementing bqAZ
- Establish the parameters for accountable performance measures



Sources

- Primary Source:
 - bqAZ
- Secondary Sources:
 - MPO and COG interviews
 - District Engineer interviews
 - ADOT WMYA Project Management Team
 - ADOT Executive Leadership
 - Other state long-range plans



Goals

- Five directly from bqAZ
 - Improve Mobility and Accessibility
 - Support Economic Development
 - Link Transportation and Land Use
 - Protect the Environment and Natural Resources
 - Enhance Safety and Security
- Three additional
 - Preserve and Maintain the System
 - Strengthen Partnerships
 - Promote Fiscal Stewardship



Objectives

- Outcome and process based
 - Outcomes establish basis for accountability
 - Process reflects commitment to support goal through improved processes
- Multimodal integration
- Define ADOT's anticipated role over next 25 years



ADOT Role

As reflected in long-range plan goals and objectives...

- Owner/Operator
 - State Highway System
- Partner
 - Transit
 - Bicycle and Pedestrian
- Advocate
 - Aviation
 - Rail



Performance Measures



Performance Measures Overview

- Purposes
 - Support scenario analysis
 - Track WMYA implementation
 - Influence programming
- Inter-related to goals and objectives
- Build from current ADOT measures and data capabilities
- Starting point for measure development varies by goal area



Well-Established Measurement Areas

- **Mobility and accessibility goal**
 - Congestion and reliability
 - Proximity to system
 - System capacity
- **System preservation goal**
 - Pavement and bridge conditions
 - Highway maintenance
 - State of good repair
- **Safety and security goal**
 - Fatalities, crashes
 - Preparedness
 - Compliance with standards & laws



Indirect Measurement Areas

- Economic development goal
 - Delay
 - Reliability
 - Economic impact, return on investment
 - Accessibility
- Environment and natural resources goal
 - Emissions
 - Compliance
 - Impacts
- Transportation and land use goal
 - Access management
 - Coordinated planning



Implementation Measures

- Fiscal Stewardship goal
- Partnership goal



Break/Discussion



Participation Plan

Committees, outreach and involvement timeline, upcoming activities, website

Kristin Bornstein



Committees

- Technical Advisory Committee
- Steering Team
- Policy Committee

*Collaborative process developed with COGs and
MPOs late 2009*



Technical Advisory Committee

Membership: technical staff from ADOT, COGs, MPOs, and FHWA

Role: review technical products, provide feedback, facilitate multi-agency support and implementation

Expectations: be prepared for meetings, engage in meaningful discussion, communicate with others about the effort, be an advocate for the Plan

Number of meetings: 4

Chair: James Zumpf, ADOT LRTP Project Manager



Steering Team

Membership: COG and MPO Executive Directors, and management staff from ADOT and FHWA

Role: oversee LRTP process to ensure collaborative partnership, broad-based support and commitment to multi-agency implementation, review and recommend content

Expectation: work toward consensus and support what is decided, be an advocate for the Plan

Number of meetings: 7

Chair: Jennifer Toth, ADOT MPD Director



Policy Committee

Membership: Elected Official representatives of the COGs and MPOs, Executive Leadership of ADOT and FHWA, the State Transportation Board, the League of Cities and Towns, Association of Counties, and Intertribal Council of Arizona

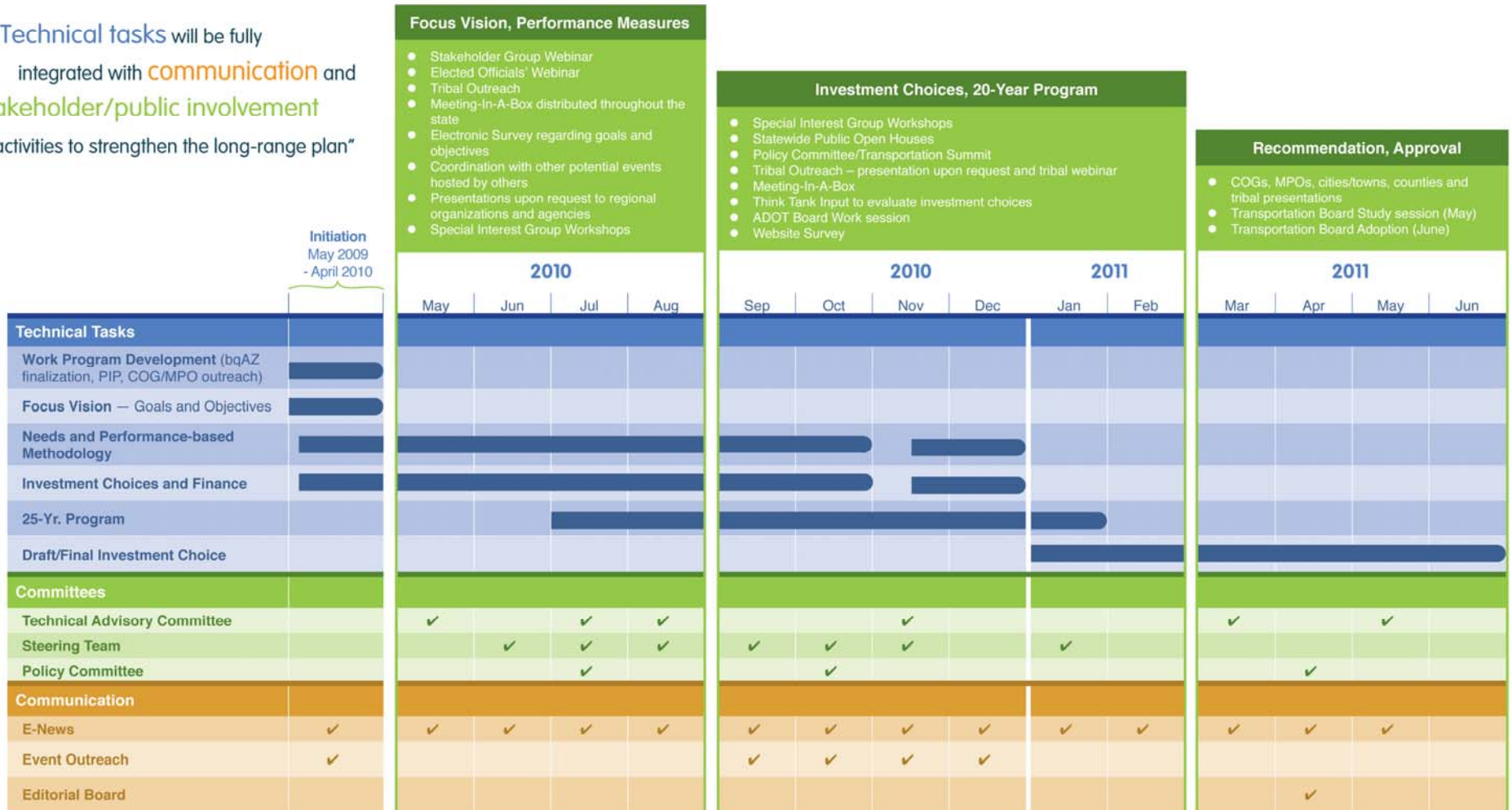
Role: discuss and endorse key strategic decisions

Expectation: work toward consensus and be an advocate of the Plan, communicate with others about the effort

Number of meetings: 3

Chair: John Halikowski, ADOT Director

“Technical tasks will be fully integrated with communication and stakeholder/public involvement activities to strengthen the long-range plan”



Ways to Get Involved



Web

- Visit www.whatmovesyourarizona.gov
- Sign up for email updates
- Submit a comment via email
- Don't have internet? Try your local library!
- Join us on Facebook



Phone/Fax

- Call 1.888.974.PLAN and leave your comment on our project hotline.
- Fax a comment to 602.712.7855.



Face to Face

- Attend a Planning or Programming public meeting and give us your thoughts. (visit our calendar at www.whatmovesyourarizona.gov for a list of upcoming events)
- Organize a community meeting. Order our "Meeting in a Box" kit online or by calling 1.888.974.PLAN. The kit will help you learn about the project and how to provide your input.
- Request a presentation to your group or organization. Project team members will present information and gather feedback from your group.



Print

- Submit a comment in writing to:
Arizona Department of Transportation
Communication and Community Partnerships
206 S. 17TH Avenue
Phoenix, AZ 85007
- Watch your local newspaper for information.
- Visit your local public library and ask to see ADOT State LRTP Materials.
- Visit your regional planning agency and pick up a fact sheet.



Upcoming Activities

- Tribal notification and follow-up
- Webinars
- Meeting-In-a-Box
- Electronic newsletters and survey
- Fact Sheet
- Special Interest Group Workshops
- Local/regional events? Let us know!

*Coordination call last Friday with COG and MPO
communication points of contact*



www.whatmovesyouarizona.gov

- Calendar
- Library
- Survey
- Update suggestions? email: twelborn@azdot.gov



Steering Team II Topics

Agreement on Goals, Objectives, and Performance Measures

Baseline Revenue Projection

Multimodal Needs



Other Items

- Discussion
- Next steps
- Next meeting July 20, 2010